



Pre-commercial Procurement of innovative ICT-enabled integrated care solutions to advance multidisciplinary health and care for patients with chronic heart failure



 www.incareheart.eu





The INCAREHEART solution will enable procurers to provide better health and care for CHF patients with a special focus on:

The five INCAREHEART procurers will jointly procure R&D services to shape an ICT-enabled integrated care solution supporting the implementation of a comprehensive multidisciplinary and cross-organisational care and support model for people living with CHF across a fully integrated patient pathway.

Building on the (siloed) solutions for integrated healthcare delivery available on the market so far, suppliers will, for the first time, integrate a comprehensive set of key features such as digital shared care plans and others into one modular ICT platform.

This will enable a breakthrough in effectively bringing different care providers, family caregivers, and patients into a shared, ICT-supported CHF care pathway that cuts across diagnosis, acute treatment, and care, as well as jointly managed long-term care.

Radical improvement of the **hospital discharge processes** and other care transitions

Profound increase of collaboration efficiency and **improvement of patient experiences** of the care system

Tailored provision of secondary **prevention measures**

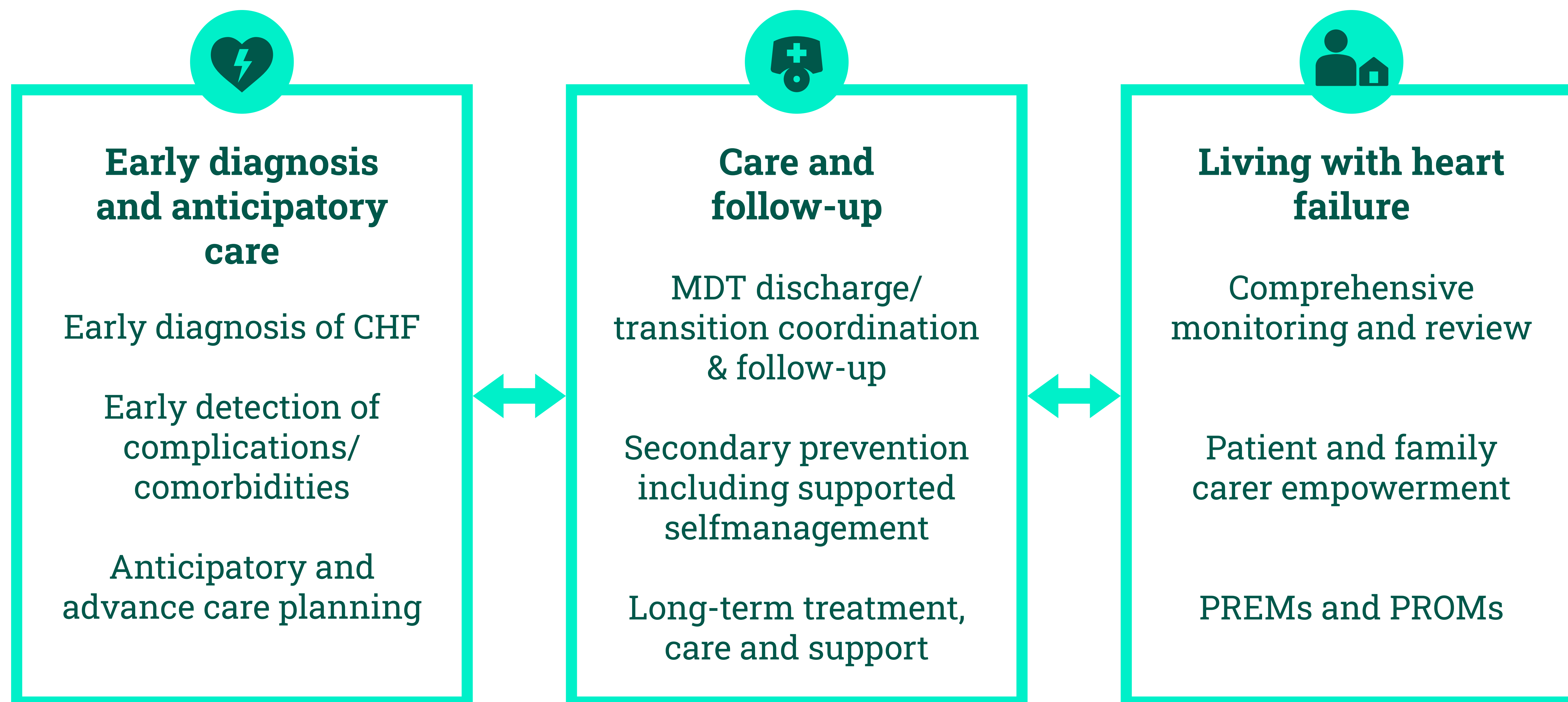
Patients being able to access their **telehealth records** and communicate with their healthcare professionals regardless of device is important

Digitally enabled real **patient empowerment** and self-management support

Innovative performance monitoring, including new ways of **PREMs and PROMs** collection

INCAREHEART will contribute to

- ✓ Reduced fragmentation of demand for integrated care solutions
- ✓ Increased opportunities for wide market uptake and economies of scale for the supply side
- ✓ Established path to innovation, with evidence of cost-effectiveness of innovative integrated care solutions
- ✓ Reducing hospital (re-)admissions through ICT-enabled transitional care
- ✓ Increasing collaboration efficiency and improving patient satisfaction
- ✓ Turning data into valuable knowledge:
The right information at the right time in the right format
- ✓ The real patient loop: Personalised support, education & increased self-efficacy

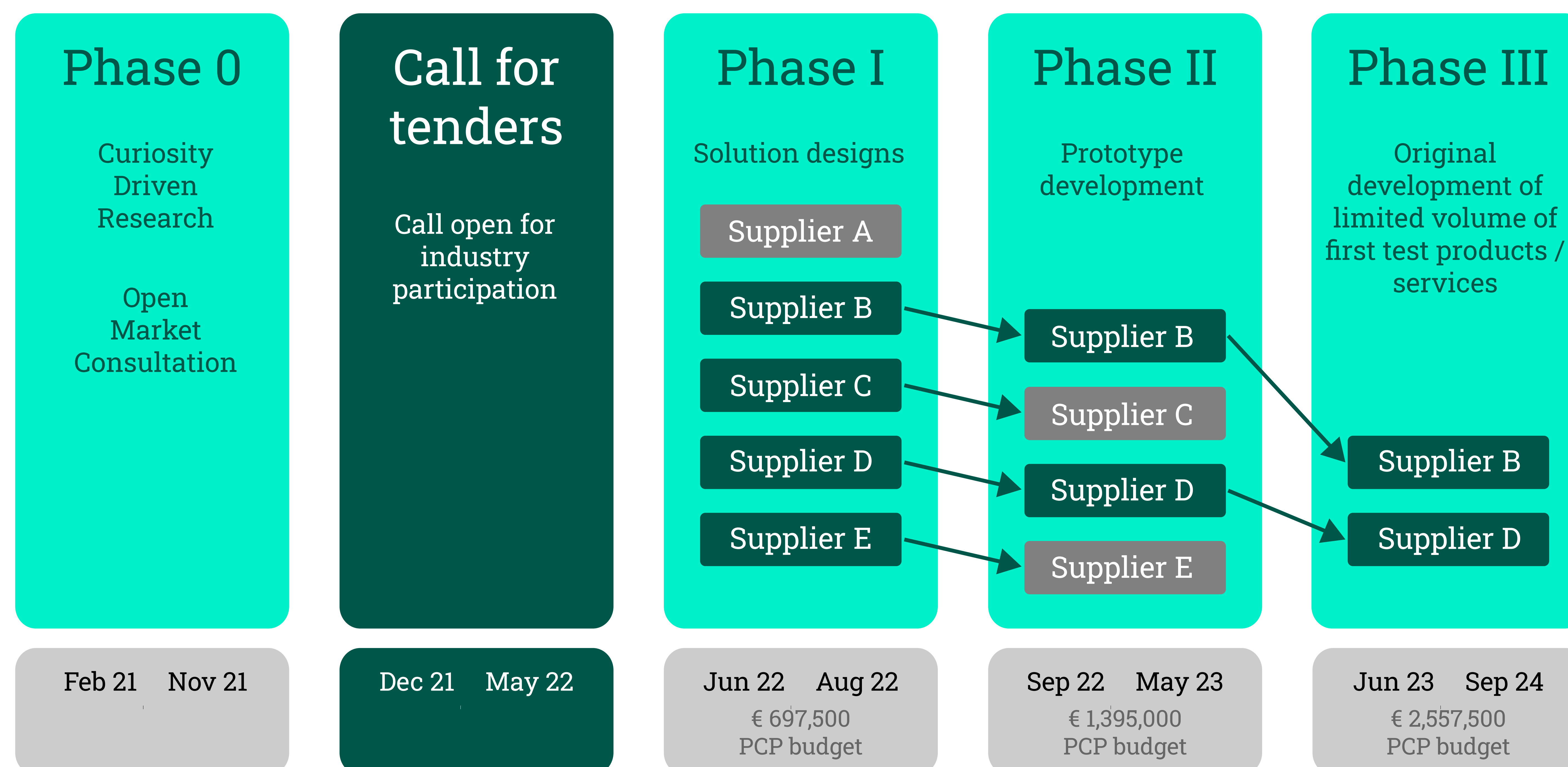


Continuous management and seamless transitions of care

- ✓ Multidisciplinary care team collaboration and coordination
- ✓ Shared and personalised decision support
- ✓ Interoperability to allow data and information to follow the patient



RTD work in the three phases



Buyers group



UNIVERSITÀ DEGLI STUDI DI NAPOLI
FEDERICO II



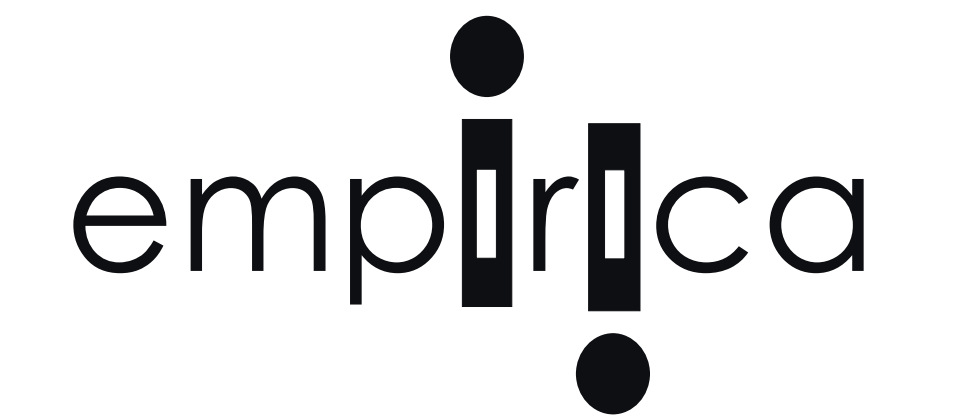
REGION of
**CENTRAL
MACEDONIA**



International Foundation
for Integrated Care



ticbiomed
BRIDGING eHEALTH



REGION JÄMTLAND HÄRJEDALEN

📍 Postal address:
Box 654
831 27 Östersund

🌐 <https://www.regionjh.se>
✉ region@regionjh.se



© 2021 empirica. All rights reserved. INCAREHEART has received funding from the European Union's Horizon 2020 research and innovation programme under grant agreement No. 965134.